

Exterior Installation Plan

installtion type

type 1 : Fixed Kiosk in front garden

type 2 : Rooftop Banner

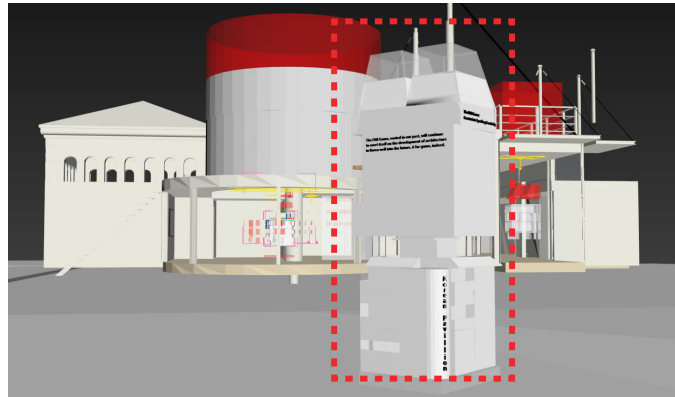
type 3 : self standing plate (Poster-like)

Fixed Kiosk in front Yard

SIZE : 600(W) X 600(L) X 2100(H)

Self Standing Structure

Material : Structure - Steel frame
Surface : Printed Fabric
Acrylic plastic



This is preliminary scheme, the shape and material could be adjusted according to fabrication, within the same size. Please check this image as reference

Followed your question,

Our kiosk will be prepared with these kind of legs at several points (image below, similar but stonger), so that it can properly located in uneven surface. And, in case of any worst scenario such as bad weather or unexpected slope, we will prepared extra support material(Hard rubber) to make it stand properly. Moreover, we will make it sure to be there structurally and aesthetically safe enough.



Exterior Installation Plan

installion type

type 1 : Fixed Kiosk in front garden

type 2 : Rooftop Banner

type 3 : self standing plate (Poster-like)

Rooftop Banner

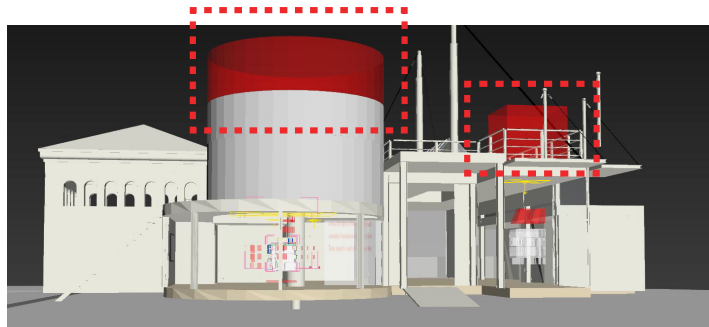
SIZE : 1. 3000(W) X 3000(L) X 3000(H)

cable tied on the rooftop Structure

2. 2000mm radius cylinder with 2000mm high

Material : Structure - Steel frame
Surface : porous Fabric

As we heard from local manager, this installaion will be planned for summer strom or strong wind.



This is preliminary scheme, the shape and material could be adjusted according to fabrication, within the same size. Please check this image as reference

Followed your question,

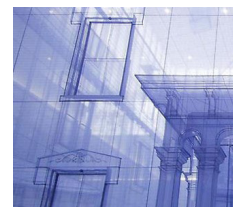
Frame with steel rectangular pipe, will be tied and fixed with wire(cable) on the roof-top. and it will be wrap up with porous fabric(Printed)



steel pipe



frame work in korea,
simple assembled in venice



fabric with lots of holes for
wind to penetrate

Exterior Installation Plan

installtion type

type 1 : Fixed Kiosk in front garden

type 2 : Rooftop Banner

type 3 : self standing plate (Poster-like)

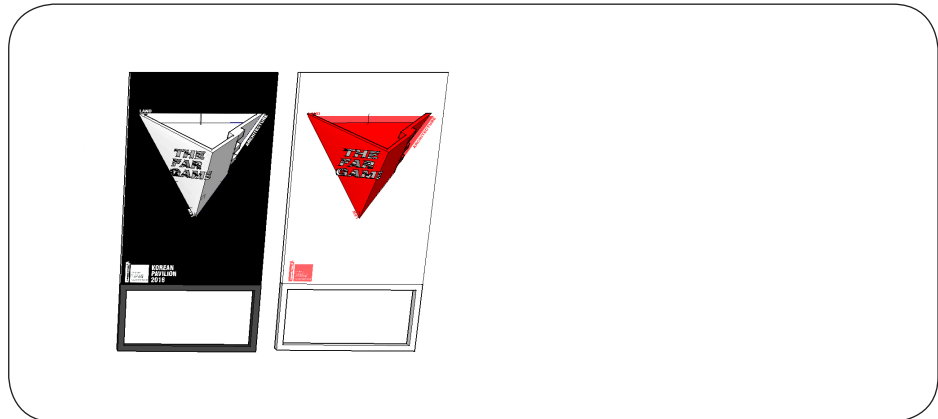
Self standing plate (Poster-like)

SIZE : 1200(W) X 50(L) X 2200(H)

Self Standing Structure

Material : Structure - Steel frame

Surface : Printed fabric with styroform



This is preliminary scheme, the shape and material could be adjusted according to fabrication, within the same size. Please check this image as reference

Followed your question,

this plate will have wider foot leg, so that not to fell over. We will design properly. And, in case of worst case, we will prepare plan B, same as 2014 koran pavilion exhibition

