

## Exterior Installation Plan

### installtion type

type 1 : Fixed Kiosk in front garden

type 2 : Rooftop Banner

type 3 : self standing plate (Poster-like)

### Fixed Kiosk in front Yard

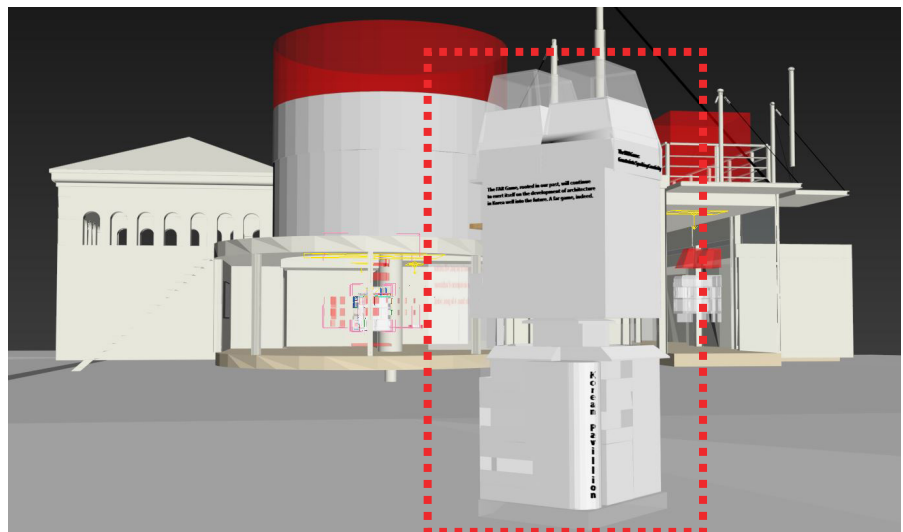
SIZE : 600(W) X 600(L) X 2100(H)

#### Self Standing Structure

Material : Structure - Steel frame

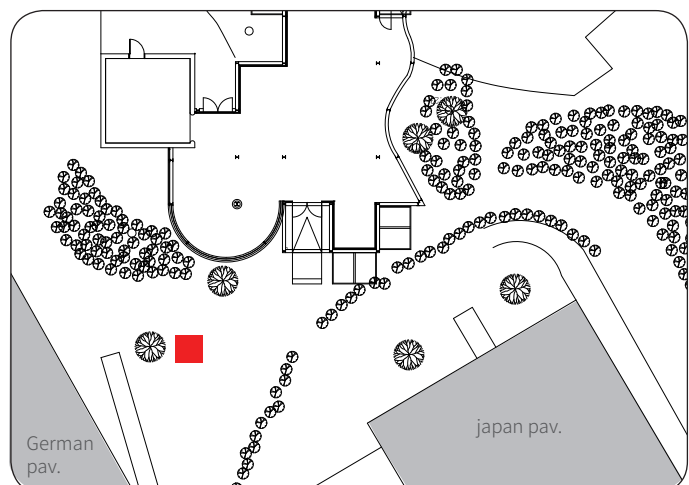
Surface : Printed Fabric

Acrylic plastic



This is preliminary scheme, the shape and material could be adjusted according to fabrication, within the same size. Please check this image as reference

Location : Front Yard



## Exterior Installation Plan

### installtion type

type 1 : Fixed Kiosk in front garden

### type 2 : Rooftop Banner

type 3 : self standing plate (Poster-like)

### Rooftop Banner

SIZE : 1. 3000W) X 3000(L) X 3000(H)

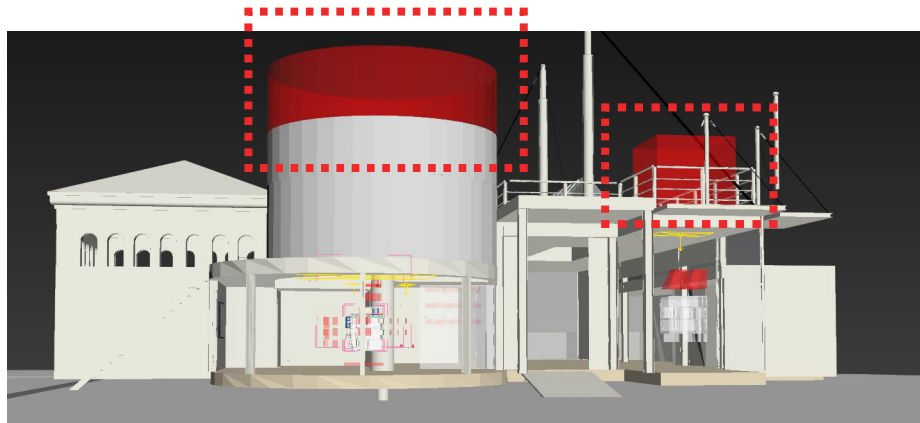
#### cable tied on the rooftop Structure

2. 2000mm radius cylinder with 2000mm high

Material : Structure - Steel frame

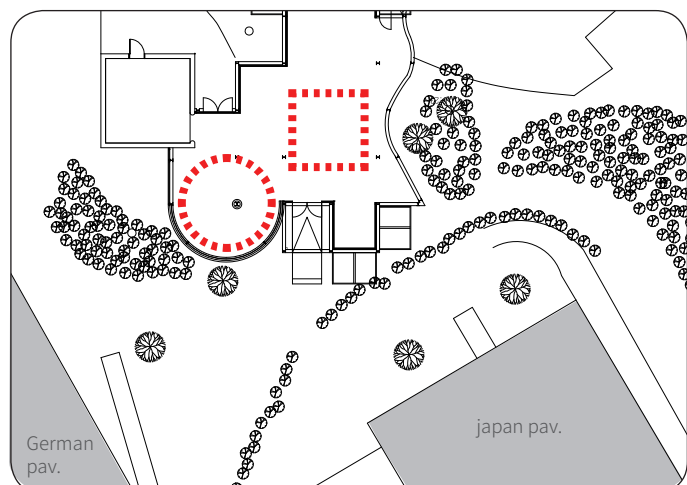
Surface : porous Fabric

As we heard from local manager, this installaion will be planned for summer strom or strong wind.



This is preliminary scheme, the shape and material could be adjusted according to fabrication, within the same size. Please check this image as reference

Location : Rooftop



## Exterior Installation Plan

### installtion type

type 1 : Fixed Kiosk in front garden

type 2 : Rooftop Banner

**type 3 : self standing plate (Poster-like)**

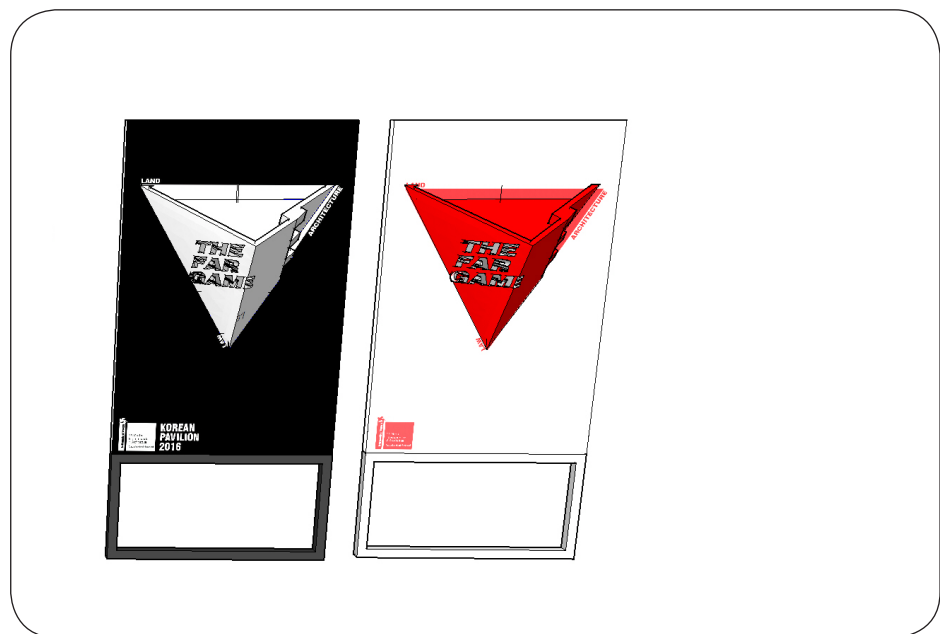
### Self standing plate (Poster-like)

SIZE : 1200(W) X 50(L) X 2200(H)

#### Self Standing Structure

Material : Structure - Steel frame

Surface : Printed fabric with styroform



This is preliminary scheme, the shape and material could be adjusted according to fabrication, within the same size. Please check this image as reference

Location : Front Yard &  
Back Yard

